



# Surface Interval

**April 2010**

[www.ruc.org.au](http://www.ruc.org.au)

## CONTENTS

FROM THE PRESIDENT	3
FROM THE COMMITTEE	3
FROM THE EDITOR	3
FROM THE DIVE OFFICER	4
SOCIAL YEAR AHEAD	4
WEBSITE OF THE MONTH	4
RUC TEN PIN BOWLING COMPETITION	5
DIVE REPORT – KEY LARGO	6
DIVE REPORT – CLOSE ENCOUNTER	10
WET CALENDAR AND TIDES FOR APRIL	12
WET CALENDAR AND TIDES FOR MAY	13
CONTACTS	14

### RYDE UNDERWATER CLUB MEMBERSHIP FEES for 2009-2010:

**Single \$85    Family Concession \$130    Social \$30**

*Membership renewals are due 30<sup>th</sup> June each year.*

Pro rata membership fees are available for new members joining during the year.

### EMERGENCY & INFORMATION PHONE NUMBERS

Diving Emergency Service (DES) within Australia	1800 088 200
Diving Emergency Service (DES) outside Australia	61 8 8373 5312
Prince of Wales Hospital, Randwick	(02) 9382 3575
Westpac Rescue Service	(02) 9311 3499
Coast Guard Sydney	(02) 9337 5033
Coast Guard Sydney Boating Weather	(02) 9337 5455
Coast Guard Sydney Boating Weather at 6.50 am and at 2 hour intervals	Radio 27 MHz
NSW Maritime Authority - Sydney Boating Weather	(02) 131 236 (opt 3)

**IF IN DOUBT - ALWAYS RING 000**

### BOAT LAUNCHING RAMPS

Map Reference (2003 Editions)

	UBD	Gregory's
Bayview	118 H13	169 B12
Tunks Park	216 H3	316 C3
Kyeemagh	275 C12	404 C12
Gunnamatta Bay	334 P13	493 J13

## From the PRESIDENT

Hi Rucites

As I write this report I have to say I am looking forward to the coming week-end. Easter approaches and I am really looking forward to diving Pt Stephens while it is still warm. After checking out various websites I realise there are so many dive sites to choose from. Oh well !. I guess we will just have to go there again in June.

I would also like to take this opportunity to welcome Natalie McCallum back to Sydney. After a short stay in sunny Queensland she has decided to return. She can also take a mean photo.

Last week-end the ladies had their annual pilgrimage to Pt Stephens. 11 ladies attended and from all reports a great week-end was had by all.

In the meantime the end of April approaches for those going to do the liveaboard on the good ship Kalinda out of Townsville. The 10 or so members of the club who are going are all very excited about this trip and spending 5 nights on the Barrier Reef. We may even dive the Yongala if the conditions are right. We should eventually have a great photo night at a general meeting especially since we are now the proud owners of a good multimedia projector.

We are presently organising our yearly trip to Pt Stephens over the June long week-end. If you don't want to miss out do not forget to let Wanda Whittaker know you are coming. It's not that far away.

Just a short reminder that at the next general meeting on Thursday 15<sup>th</sup> April Diego Molla will be showing photo's from a diving holiday at Okinawa in Japan earlier in the year.

On a final note 10 camp sites have been booked at Currarong Caravan Park for Xmas 2010 from Sunday 26<sup>th</sup> December to Saturday 1<sup>st</sup> Jan 2010 so do not forget to mark this down in your diaries

Safe diving  
Peter Hardman  
President

## From the EDITOR

Lots of dive trips should mean we have plenty of dive reports and photos to fill the next few Surface Intervals. Can the DALs please appoint the appropriate people ☺



Years in the planning, months of hard work by many people, parties organised to celebrate the scuttling of the ex HMAS Adelaide and then a few discontented locals – with the help from some professional protesters – have put everything on hold. If they are right in their claims, I fully support them and want all issues resolved before any scuttling. If they are not, I would prefer them to act like captains used to do when their boat sank.....

Rob van der Zalm.

## From the DIVE OFFICER

### Dive Officers Spiel, April 2010

Rucites,

Its been a fairly quiet month dive wise. I think the shore dives out weighted the boat dives, of course that includes the ladies weekend away at Port Stephens a couple of weeks ago.

It has been a bit windy this month also, which impacts on the boat dives.

It was disappointing to hear that the sinking of the Adelaide had been postponed and maybe even prevented from being sunk as an artificial reef off Terrigal, due to some court action just days before the big event. No doubt that would have riled a few local who were involved in the festivities for the day. Certainly as a diver I welcomed the fact that the sinking would certainly enhance the fish life in the area, and give us a shipwreck to dive on in a safe and protected manner. I have not heard of the next prospective date if any for the sinking.

Easter long weekend saw Peter away with 5 divers at Pt Stephens, he reports an enjoyable weekend and many pictures taken. The end of April we have Anzac day and a public holiday for the Monday, so lets see if we can run the boat out of Sydney for the 3 days??



Ken Jackson  
Dive Officer.

### THE SOCIAL YEAR AHEAD

	Date	Activity	Location	Contact
April	2 <sup>nd</sup> – 4 <sup>th</sup>	Easter Weekend away	Post Stephens	Peter Hardman
April	24 <sup>TH</sup>	10 Pin Bowling Competition	6:30PM AT Castle Hills Bowling Centre	John Chadd
April	29 <sup>th</sup> – 4 <sup>th</sup> May	Long weekend diving the Yongala in QLD	Townsville	Natalie McCallum
May	29 <sup>th</sup>	RUC Anniversary Dinner	TBC	Penny Trickett
June	12 <sup>th</sup> – 14 <sup>th</sup>	Queen's Birthday Long Weekend going North	Nelson Bay Port Stephens	Wanda Whittaker
October		October Long weekend	TBA	Ken Jackson

### WEBSITE OF THE MONTH

Grey Nurse Shark Birth in Captivity: <http://www.youtube.com/watch?v=bi6LC5ItEto>

No Nudibranch:

<http://www.smh.com.au/multimedia/environment/sydney-harbours-underwater-treasures/20100408-rurb.html>

## RUC TEN PIN BOWLING COMPETITION

Dear RUCites,

I am currently organising this year's Annual RUC Ten Pin Bowling Competition on John's behalf.

For: RUCites and their guests



Annual RUC Ten Pin Bowling Competition, (winner of the Annual RUC Ten Pin Bowling Competition must be a fully registered RUC member in order to be awarded the trophy). Four lanes have been tentatively booked - max. six bowlers per lane

Please email me (Dale) to book your spots/lanes. [dale.john@jaid.id.au]

Cost:

Adults: \$14.95 per game payable on the night

Concession/students: \$13.50 per game payable on the night

Donations for maintaining the tub \$??? Check your piggy banks

When: Saturday, 24<sup>th</sup> April 2010 @ 6:30pm

Where: AMF Bowling Castle Hill, New South Wales

Address 3 Salisbury Road

Castle Hill NSW 2154

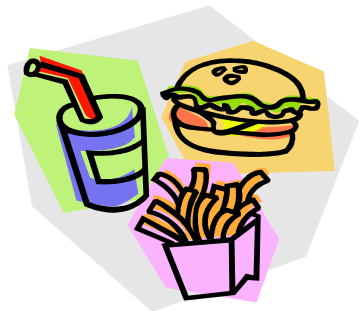
Entry: via Hudson Avenue, Castle Hill

Parking: Free customer parking

Venue Phone : 02 9680 7677 (in case of unexpected delays to your arrival, staff can be asked to pass on a message)

Why: To have a fun time and perhaps raise dollars towards maintaining the club tub.

Food: Restaurant/cafe style food available which is not included in games price.



TWO MYSTERY LUCKY DOOR PRIZES WILL BE OFFERED TO RUC BOWLERS

(1X JUNIOR AND 1X ADULT)

Lucky door tickets will be issued once bowling has commenced

Draw will take place at time of Trophy presentation

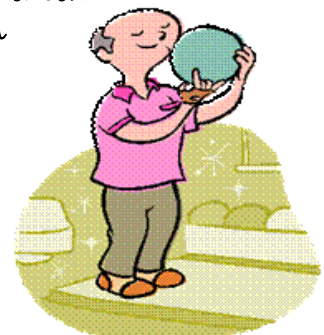
Attached is a link for your information.

<http://www.amfbowling.com.au/centres/NSW/Castle-Hill.aspx>

Regards,



Dale Chadd



## DIVE REPORT – KEY LARGO

*Aria Lee*

Key Largo, Florida, USA  
3 – 5 March 2010

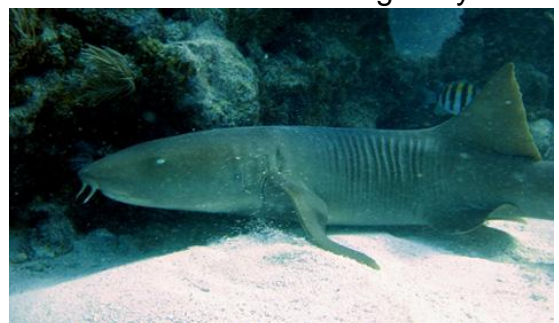
“It’s NEVER this cold here,” was the phrase I most encountered while staying in the Florida Keys. The week I spent in Key Largo just happened to be the coldest in 100 years. This however did not stop me from diving.

Key Largo is situated in the Upper Keys, around 1.5 hours drive south of Miami, and 2.5 hours east of Key West. I went out with Rainbow Reef Dive Centre, located at the Ramada hotel complex. I bought a 3 day, 6 dive package that included a discount at the Ramada.

As the unseasonal cold weather also brought unseasonal wind and swell, we were limited to diving Molasses reef on our first day. This reef is home to beautiful hard and soft coral formations and some nice swim-throughs.



The sprawling reef lies in shallow waters only 10-12m deep. There are around 15 mooring buoys at Molasses, and we started our first dive at Eagle Ray Alley. The visibility was approximately 15m, well short of the usual 30m. We did however see some eagle rays swim by, as well as a turtle, and my favourite of all time, some Christmas tree worms. Our second dive was at the Winch Hole, the site of an old ship’s winch. As expected the variety of fish life was not as diverse as Australia, but we did see some beautiful specimens of triggerfish, stingray and the Caribbean’s snub nosed version of a grey nurse shark.



Day 2 was for wreck diving. I was especially looking forward to diving the Spiegel Grove, the wreck of the US dock landing ship. This is a big ship - 160 metres long and 26 metres wide. It was scuttled as an artificial reef, but while it was being towed to its intended location, bad weather sunk the ship prematurely, leaving it in an exposed position with strong current at a depth of 30-35 metres. With this current comes unpredictable visibility. On days of 30m plus vis, the enormous scale of the ship can be fully appreciated. The visibility on my dive was around 8 metres. Though I could not perceive the length of the ship, I was certainly able to appreciate its enormous height. We dived near the bow of the ship where the American flag still waves in the passing current.



Descending quickly to 28m, we were able to swim inside the ship where the water was surprisingly clear and sediment free. On the outside of the ship there were many gorgonias and other soft corals and amongst them were trumpet fish, damsel fish and more Christmas tree worms.

Our second wreck for the day was the Benwood. Lying in around 12m of water, the Benwood consists of the bare skeleton of a hull. During WWII, this ship was sailing without lights to avoid detection by the German U-boats. The Benwood collided with another allied ship, causing it to run aground. I was told that after this event the ship was bombed by several different parties. First, the Germans torpedoed it, then the US Navy used it for target practice. Finally, the US Coast Guard determined it a navigational hazard, and sunk the ship fully.



Scattered around the remnants of Benwood's hull are the broken remains of the rest of the ship. The hull is now home to hundreds of tiny and not so tiny fish, including several species of colourful cowfish that I cannot identify. Oh, and there were also lots of Christmas tree worms.



My last day of diving was spent back at Molasses reef, this time at a mooring called Fire Coral Cave. As we were descending, I became distracted by a Nudibranch that I had never seen before (*Glossodoris sedna*).



While taking photos of it, I nearly sat on a green turtle that was napping amongst the coral.



Extend the range of your diving with courses from TDI/SDI. Email [info@tdisdi.com.au](mailto:info@tdisdi.com.au)

The most impressive fish were the blue-spotted linefish and a spotted cowfish that I cannot identify.



And the most impressive invertebrates were the Christmas tree worms.



Though it was cold on the surface, the water temperature was a tolerable 21°C. Getting out of the water and back on the boat was the worst part because the cold wind cut at your hands and face. However, I thoroughly enjoyed my Florida Keys dives. Rainbow Reef Dive Centre is a professional and friendly outfit, with knowledgeable skippers and agreeable dive guides. I hope to be back there in the near future, when the air and water is much warmer.

*John Strickland*

*A Close Encounter of the Toothy Kind*

As we are approaching the shark diving season, well up here in Queensland anyway, I thought that I would share with you a rather good article written by Lex Bowden who is an occasional dive buddy of mine up here with the URGQ.

Perhaps it is timely to remind ourselves that magnificent these creatures are, the Gray Nurse Shark is still a rather large shark and more than capable of getting a little aggro with us divers. Particularly during the mating season. Knowing their mating habits, I for one would not like to be mistaken for a female GNS and as Lex found out, the encounter he had may have been with a Gay Nurse Shark! Enjoy.

I'm pleased to say for once that I was not on that dive.

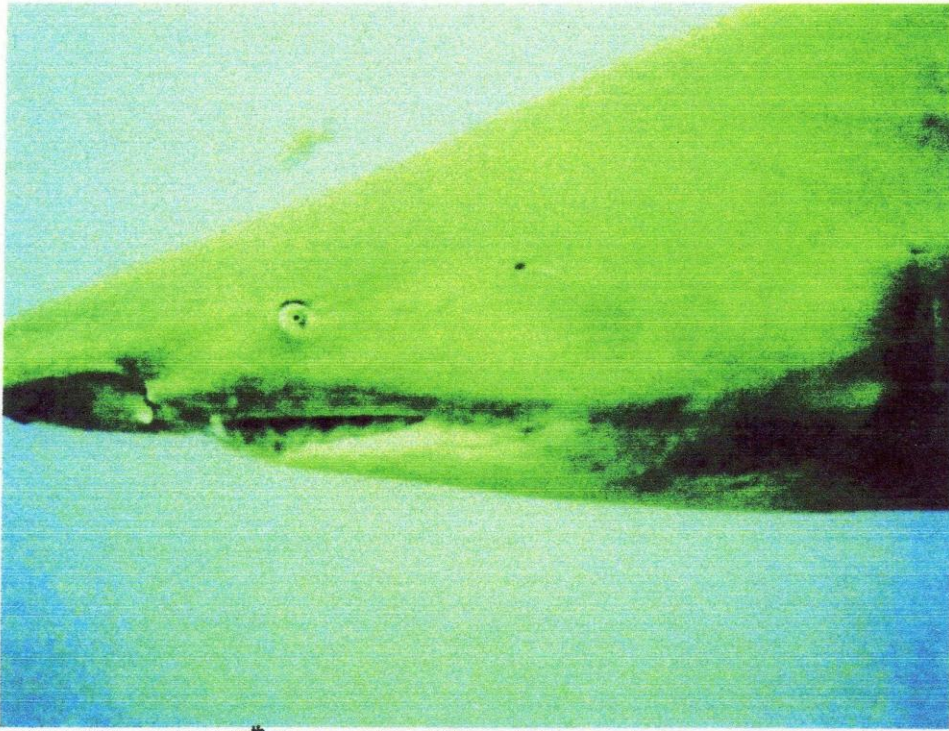
Sent in by John Strickland.

**HORNY, HUNGRY, OR JUST UNHAPPY...Lex Bowden**

I have often been asked by non-divers whether I get scared swimming with the large Grey Nurse Sharks. Of course I bravely shrug off such comments and just say that GNS are just harmless creatures who wouldn't hurt a anyone. Well after my last dive at Henderson's Reef, I'm going to be a little more circumspect with those sorts of comments in the future.

When we arrived at Hendo's the water was a little more green than blue and the viz was never going to be spectacular. The water was quite cold at only 17C as I started to descend the anchor line with my buddy Callum. When we arrived at the bottom we easily found the main drop-off and started our dive. Hendo's was full of it's usual gorgeous creatures and it wasn't long before the first GNS glided into view. Then another and another. None of them seemed to pay us any attention and they just swam about like GNS are supposed to do. They really are special!

Towards the end of the dive, Callum and I split up. I went over the edge of the main drop-off on the eastern side of Hendo and Callum explored the section of reef just to the west of me on his way back to the boat. With a few seconds of me starting my descent down the drop-off, a large male GNS came rushing in towards me from out of the gloom. I had no where to go, as I was already hard up against the rock wall. He came close enough for me to have to hit him on the nose with my hand to get him to turn. This happened another 3 times in quick succession. I was getting a little nervous at this point as I was still on the wrong side of the drop-off, pinned against the wall and at least 50m from where I thought the anchorline was. I tried to swim up over the wall and make my way back to the anchor. This large shark followed me the entire way and I must have had to kick or hit it away about a dozen times. It wasn't using the usual slow swimming style I had been expecting. It was clearly agitated and was not happy with me.



After what seemed like ages I finally found the anchorline and started my way up off the bottom. The shark was on me the whole way...mainly around my legs. More kicking, more hitting. As I got to the 5m safety stop I found my mate Ian and his very new dive buddy, Angie, just finishing their stop. They saw me 'dancing about' as I was coming up the anchorline, but the viz wasn't good enough for them to see exactly why I was so 'energetic'. Well they soon found out as I got to them, they saw the shark coming back up to me and buzzing around my legs. I looked at Angie (I

think this was her 10<sup>th</sup> dive ever), and through her mask, her eyes were as big as saucers. I signalled for them to get up to the boat asap...they were happy to comply with that. I wasn't going to be hanging off the anchor line, and so ascended up under the hull, as close as I could.

The shark stayed down at about 5m and only made one more pass at me when I was under the boat. Out wide I could see another very large shark and so I wasted no time in getting myself out of the water and safely back on the boat. Back on the boat I was catching my breath and discussing what had just happened and a turtle came up beside the boat. As we were watching it, a large tiger shark came up from the depths and nailed it. Not all that much was said after that. In fact it was all pretty quiet.

I was just calming down as Ian started to winch the anchor up...the anchor was firmly jammed on something and someone was going to have to go back over the side to unjam it. I don't actually recall voting in the election that followed, but somehow was democratically elected as the one who was going back over the side to free the anchor. I have to say that I was less than keen on this process but complied with the group decision. No GNS came near me, although I could see a large shark just slowly swimming round me just on the edge of the viz (maybe about 10-15m away. I'm not sure if it was a GNS or a tiger, but I wasn't down there to make a positive ID, and as soon as I had the anchor free, I was out of there...and headed up to the boat not unlike what I imagine the launch of a Polaris missile would look like.

I have to say though, I've been diving for almost 35yrs and in that time have had a few very close and unpleasant encounters with some very large sharks, but this was the first time I've had any real issues with GNS. It's mainly been tigers, whites or large whalers...but never Greys. There's no doubt that if that shark had really wanted to cause me some serious harm, then it could easily have done it. It didn't. Maybe it just wanted to scare the daylights out of me (it worked)...or maybe it was just a horny male and I was looking extremely attractive in my tight 5mm wetsuit (have to say that I do look pretty good in it)...perhaps it was a Gay Nurse Shark. I had whacked my head against a bommie early in the dive and had some blood oozing from my head...probably not the best thing, but at the time I didn't give it much thought. The water was cold enough for my head to be numb anyway. Not sure what it was, but the end result was an encounter that left me a little shaken and a little more cautious when it comes to GNS during the breeding season.

## WET CALENDAR – APRIL 2010

DATE	LOCATION	CODE	DEPTH (approx)	MEETING TIME & PLACE	DIVE ACTIVITY LEADER (DAL)
Fri 2	Easter Long Weekend	R	varies	Pt Stephens	Peter Hardman
Sat 3					
Sun 4					
Sat 10					
Sun 11	Osbourne Shoals	R		Gunnamatta Bay	Ken Jackson
Thu 15	Ryde Eastwood Leagues Club	M		Denistone Room @ 7:30 pm	General Meeting
Sun 18	Maroubra Sharks	R	20m	8.00am Kyeemagh Ramp	Peter Hardman
Sat 24	Shelley Reef	R		8.00 Tunks Pk	DAL
Mon 26	ANZAC public holiday	R		DAL's choice	DAL
29 <sup>th</sup> – 4 <sup>th</sup> May	Queensland	C	varies	Yongala Dive trip	Natalie McCallum

**CODES:** C = Commercial Operator    M = Meeting    N = Night Dive    R = RUC Tub    S = Shore Dive

**Member Please Note:-** If there is no DAL for a particular day or there is no scheduled dive on a day you would like to dive then Please contact the Dive Officer – Ken Jackson and arrangement can be made to get the DIVE happening.

## APRIL TIDES

														Thu 1		Fri 2		Sat 3	
														Time	Ht	Time	Ht	Time	Ht
														0346	0.25	0439	0.31	0531	0.40
														0950	1.54	1039	1.41	1128	1.30
														1543	0.38	1622	0.48	1701	0.58
														2207	1.83	2251	1.78	2336	1.69
Sun 4		Mon 5		Tue 6		Wed 7		Thu 8		Fri 9		Sat 10							
Time	Ht	Time	Ht	Time	Ht	Time	Ht	Time	Ht	Time	Ht	Time	Ht						
0627	0.49	0025	1.59	0120	1.50	0225	1.44	0333	1.43	0433	1.44	0523	1.47						
1219	1.20	0726	0.57	0828	0.62	0930	0.63	1026	0.61	1113	0.56	1152	0.52						
1745	0.67	1315	1.14	1422	1.12	1534	1.14	1636	1.21	1724	1.29	1804	1.38						
		1836	0.75	1942	0.79	2059	0.80	2210	0.76	2309	0.69	2358	0.62						
Sun 11		Mon 12		Tue 13		Wed 14		Thu 15		Fri 16		Sat 17							
Time	Ht	Time	Ht	Time	Ht	Time	Ht	Time	Ht	Time	Ht	Time	Ht						
0605	1.50	0041	0.55	0120	0.49	0159	0.44	0237	0.41	0318	0.39	0401	0.39						
1227	0.48	0645	1.52	0722	1.52	0759	1.50	0837	1.47	0917	1.43	1000	1.38						
1839	1.47	1259	0.45	1329	0.44	1359	0.44	1430	0.45	1504	0.48	1543	0.52						
		1913	1.56	1945	1.64	2017	1.71	2052	1.75	2130	1.78	2211	1.78						
Sun 18		Mon 19		Tue 20		Wed 21		Thu 22		Fri 23		Sat 24							
Time	Ht	Time	Ht	Time	Ht	Time	Ht	Time	Ht	Time	Ht	Time	Ht						
0448	0.41	0542	0.45	0642	0.48	0047	1.67	0155	1.64	0307	1.63	0415	1.65						
1048	1.32	1141	1.27	1241	1.23	0747	0.48	0854	0.46	0955	0.42	1048	0.38						
1624	0.57	1713	0.62	1811	0.67	1350	1.23	1503	1.27	1609	1.37	1705	1.50						
2256	1.75	2347	1.71			1921	0.69	2039	0.68	2155	0.61	2302	0.52						
Sun 25		Mon 26		Tue 27		Wed 28		Thu 29		Fri 30		Sat 1							
Time	Ht	Time	Ht	Time	Ht	Time	Ht	Time	Ht	Time	Ht	Time	Ht						
0514	1.66	0003	0.43	0100	0.35	0154	0.30	0245	0.29	0333	0.31	0422	0.36						
1137	0.34	0609	1.65	0702	1.62	0753	1.56	0843	1.49	0931	1.41	1019	1.34						
1756	1.63	1223	0.33	1305	0.34	1347	0.38	1428	0.44	1508	0.51	1548	0.58						
		1844	1.75	1929	1.84	2014	1.89	2057	1.90	2140	1.88	2222	1.81						

Time in 24 hour clock, height (Ht) in metres above Chart Datum, red for low tide and blue for high tide.

Times stated are Australian Eastern Standard Time. During Daylight Saving Time (when in force) one hour needs to be added to the times stated.

## WET CALENDAR – MAY 2010

DATE	LOCATION	CODE	DEPTH (approx)	MEETING TIME & PLACE	DIVE ACTIVITY LEADER (DAL)
Sun 2	The Duckenfield	R	24m	.00am Tunks Park	
Sat 8	Henry Head	R	26m	8.00am Kyeemagh	
Sun 16	The Gap	R	28m	.00am Tunks Park	Ken Jackson
Thu 20	Ryde Eastwood Leagues Club	M		Denistone Room @ 7:30 pm	General Meeting
Sat 22		Shore dive			
Sun 23	Manly Reef	R	18m	8.00am Tunks Park	
Sat 29	Dee Why wide	R	28m	.00am Tunks Park	

**CODES:** C = Commercial Operator    M = Meeting    N = Night Dive    R = RUC Tub    S = Shore Dive

### MAY TIDES

Sun 30		Mon 31												Sat 1	
Time	Ht	Time	Ht											Time	Ht
0401	0.40	0444	0.44											0422	0.36
0958	1.31	1041	1.28											1019	1.34
1521	0.61	1602	0.65											1548	0.58
2157	1.81	2235	1.74											2222	1.81
Sun 2		Mon 3		Tue 4		Wed 5		Thu 6		Fri 7		Sat 8			
Time	Ht	Time	Ht	Time	Ht	Time	Ht	Time	Ht	Time	Ht	Time	Ht		
0510	0.43	0559	0.50	0649	0.56	0037	1.54	0131	1.47	0234	1.43	0335	1.41		
1107	1.27	1154	1.22	1245	1.19	0741	0.60	0833	0.62	0924	0.61	1011	0.58		
1630	0.65	1714	0.71	1802	0.77	1341	1.19	1442	1.22	1541	1.28	1632	1.36		
2304	1.73	2348	1.63			1901	0.81	2010	0.82	2121	0.80	2228	0.75		
Sun 9		Mon 10		Tue 11		Wed 12		Thu 13		Fri 14		Sat 15			
Time	Ht	Time	Ht	Time	Ht	Time	Ht	Time	Ht	Time	Ht	Time	Ht		
0430	1.41	0520	1.42	0013	0.61	0056	0.53	0138	0.46	0220	0.40	0304	0.37		
1053	0.55	1131	0.53	0604	1.42	0647	1.42	0730	1.42	0815	1.41	0900	1.39		
1716	1.45	1756	1.55	1207	0.51	1242	0.50	1318	0.50	1357	0.50	1438	0.51		
2324	0.68			1832	1.64	1909	1.73	1947	1.81	2027	1.87	2110	1.90		
Sun 16		Mon 17		Tue 18		Wed 19		Thu 20		Fri 21		Sat 22			
Time	Ht	Time	Ht	Time	Ht	Time	Ht	Time	Ht	Time	Ht	Time	Ht		
0350	0.35	0441	0.35	0534	0.37	0631	0.39	0035	1.75	0138	1.67	0245	1.61		
0949	1.37	1041	1.34	1136	1.32	1236	1.32	0730	0.41	0827	0.42	0921	0.42		
1523	0.53	1613	0.56	1707	0.60	1807	0.64	1339	1.34	1443	1.40	1543	1.49		
2156	1.90	2245	1.87	2337	1.82			1915	0.66	2028	0.66	2142	0.62		
Sun 23		Mon 24		Tue 25		Wed 26		Thu 27		Fri 28		Sat 29			
Time	Ht	Time	Ht	Time	Ht	Time	Ht	Time	Ht	Time	Ht	Time	Ht		
0350	1.55	0452	1.51	0550	1.47	0054	0.42	0145	0.37	0233	0.36	0318	0.37		
1012	0.42	1100	0.43	1147	0.45	0645	1.43	0737	1.40	0826	1.36	0913	1.33		
1639	1.60	1731	1.70	1820	1.79	1231	0.47	1315	0.50	1358	0.53	1440	0.57		
2252	0.56	2357	0.48			1907	1.86	1952	1.89	2035	1.89	2116	1.86		

Time in 24 hour clock, height (Ht) in metres above Chart Datum, *red for low tide* and *blue for high tide*.  
 Times stated are Australian Eastern Standard Time. During **Daylight Saving Time** (when in force) one hour needs to be added to the times stated.

## YOUR COMMITTEE

### PRESIDENT

Peter Hardman  
Ph (h) 4878 5211 (m) 0414 934 933  
president@ruc.org.au

### TREASURER

Richard Ling  
Ph (m) 0419 124 825  
treasurer@ruc.org.au

### EQUIPMENT OFFICER

Garry Bronatowski  
Ph (h) 9686 3990 (m) 0411 575 916  
equipment@ruc.org.au

### SOCIAL OFFICER

Penny Trickett  
Ph (h) 9817 8050 (m) 0430 034 320  
social@ruc.org.au

### SECRETARY

Wanda Whittaker  
Ph (h) 9858 4795 (m) 0414 584 795  
secretary@ruc.org.au

### DIVE OFFICER

Ken Jackson  
Ph (h) 9686 2464 (m) 0409 141 560  
dive@ruc.org.au

### MAGAZINE EDITOR

Rob van der Zalm  
Ph (h) 9889 0895 (m) 0438 890 894  
editor@ruc.org.au

### WEB MASTER

Andrew Weeks  
Ph (h) 9869 1949 (m) 0407 947 480  
rucwebmaster@ruc.org.au

## MEMBER ONLY CONTACTS

Email Groups:  
All Members: [ruc01@yahoo.com](mailto:ruc01@yahoo.com)  
Committee: [rucom@yahoo.com](mailto:rucom@yahoo.com)

Yahogroups:  
ruc01: <http://groups.yahoo.com/group/ruc01/>  
rucom: <http://groups.yahoo.com/group/rucom/>

## CONTRIBUTE TO SURFACE INTERVAL

Regardless of whether you have been on an exciting dive lately or just been surfing on the internet, if there is something you would like to share with your fellow club members, why not contribute to the next edition of Surface Interval.

Just e-mail your contribution to the editor either as an attachment, or in the body of the message. A page is around 1,000 words and the closer you get to that (or 500 for a ½ pager), the better. There's a word count function in MS Word under the "tools" pull-down menu, which does the job for you.

Remember articles submitted may be posted to the Club's website.

## SURFACE INTERVAL DEADLINE

The deadline for each issue of Surface Interval is the third Wednesday of the preceding month. That means

**The deadline for the May edition is 25<sup>th</sup> April.**



## Frog Dive Scuba Centres

395 Guildford Road, Guildford

9892-3422

539 Willoughby Road, Willoughby

9958-5699



Our members have a common interest in SCUBA diving. Dives are organised and conducted nearly every weekend around Sydney using the club boat and sometimes boats owned by club members.

Our club also organises weekend and holiday trips to interesting dive locations north and south of Sydney. A variety of social activities are organised throughout the year for members and their families.

Our club conducts meetings at **7.30 pm** on the **3<sup>rd</sup> Thursday** of each month at:

Ryde-Eastwood Leagues Club  
117 Ryedale Road, West Ryde

**New members are always welcome to attend our meetings and join in with our activities.**

**RYDE UNDERWATER CLUB INC.**

PO Box 144 West Ryde NSW 1685

Website: <http://www.ruc.org.au>

Email: [info@ruc.org.au](mailto:info@ruc.org.au)

Ph: 0422 504 553